



Kitchener Mews

2 bedroom
plus study
Semi-detached home
Plot 1 (90.2sq.m.)

Room	Dimensions
Kitchen/Diner/Lounge	4.5m x 6.5m
W/C	2m x 2.5m
Bedroom 1	3.8m x 3.8m
Bedroom 2	2.7m x 3.8m
Study	2.2m x 3m
Bathroom	2.2m x 1m

All sizes are approximate and may be subject to change

Ground Floor

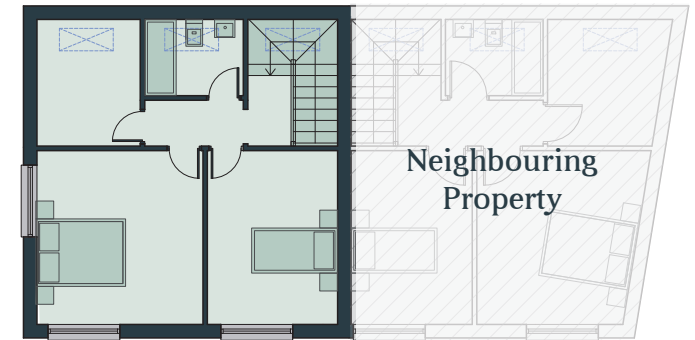


Entrance



Neighbouring
Property

First Floor



Neighbouring
Property





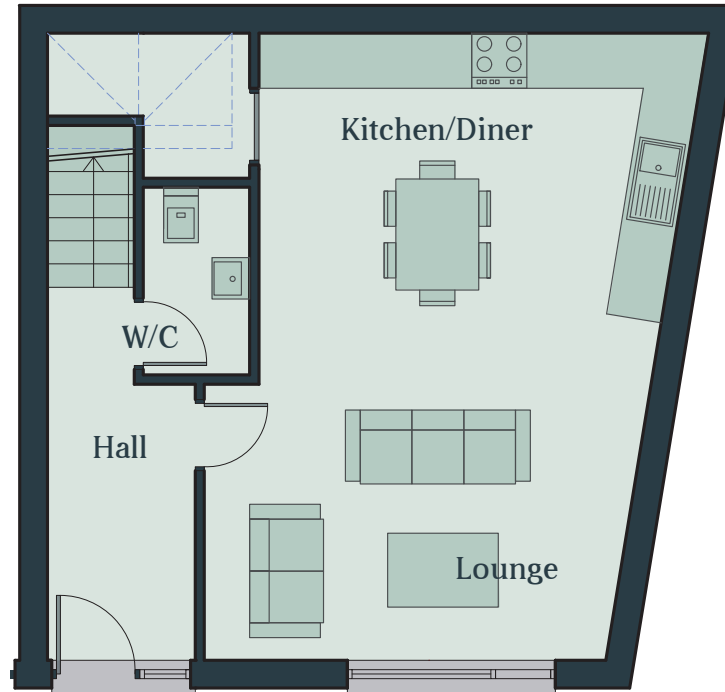
Kitchener Mews

2 bedroom
plus study
Semi-detached home
Plot 2 (88.2sq.m.)

Room	Dimensions
Kitchen/Diner/Lounge	4.5m x 6.5m
W/C	2m x 2.5m
Bedroom 1	3.8m x 3.8m
Bedroom 2	2.7m x 3.8m
Study	2.2m x 3m
Bathroom	2.2m x 1m

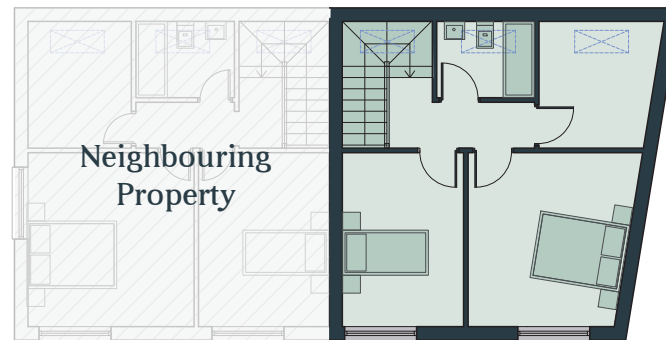
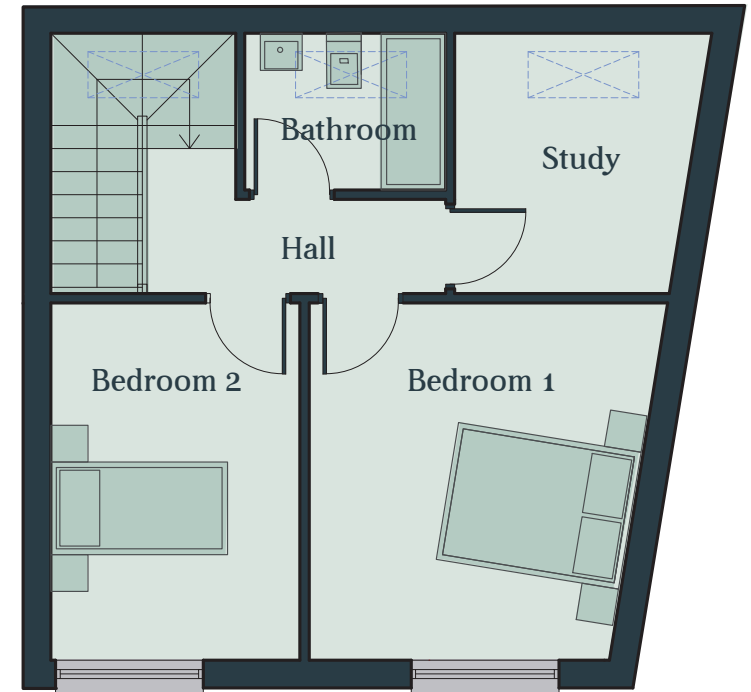
All sizes are approximate and may be subject to change

Ground Floor

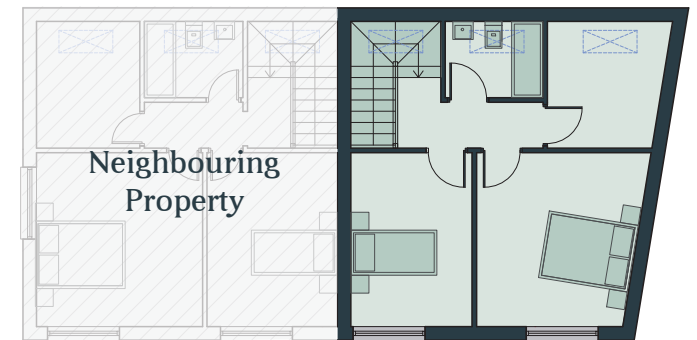


Entrance

First Floor



Neighbouring
Property



Neighbouring
Property





Kitchener

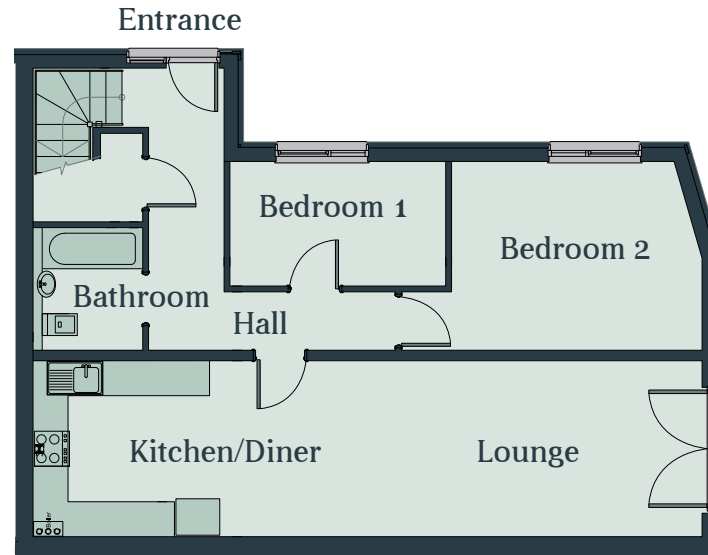
Mews

3 bedroom
End terrace home
Plot 3 (106.7sq.m.)

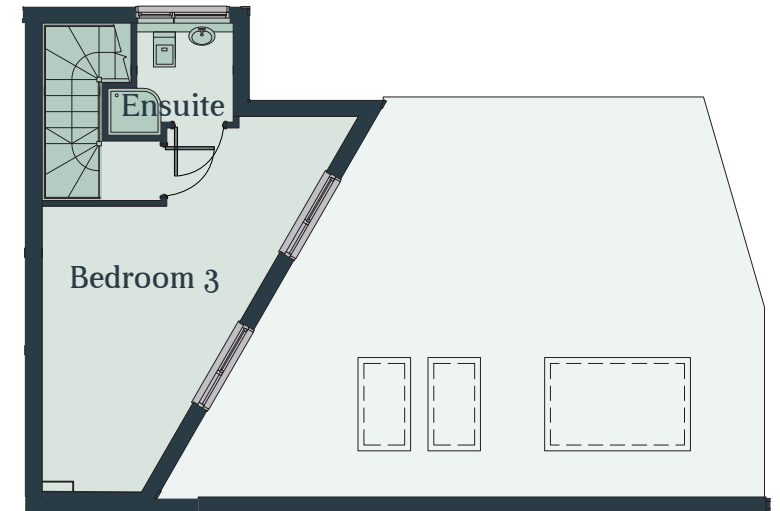
Room	Dimensions
Kitchen/Diner/Lounge	11.3m x 3m
Bathroom	1.8m x 2.1m
Bedroom 1	3.7m x 2.1m
Bedroom 2	4m x 3.1m
Bedroom 3	4.2m x 6.2m
Ensuite	1.6m x 1.6m

All sizes are approximate and may be subject to change

Ground Floor



First Floor





Kitchener

Mews

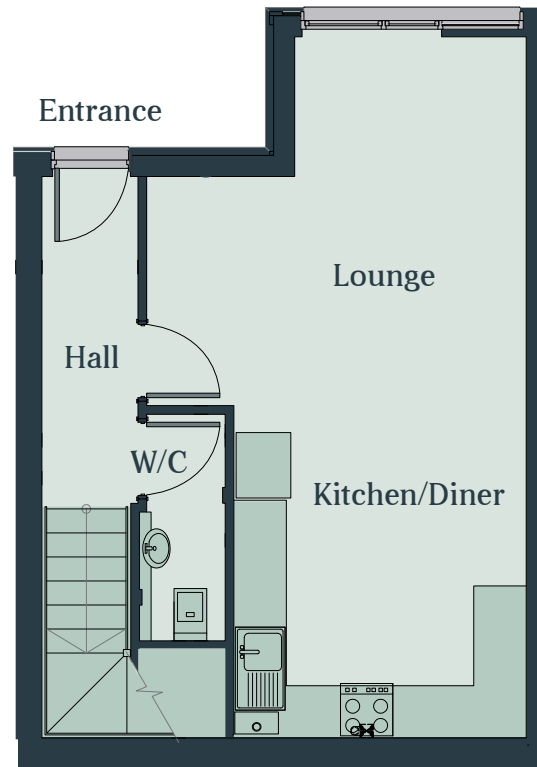
2 bedroom

Mid terrace home
Plot 4 (82.8sq.m.)

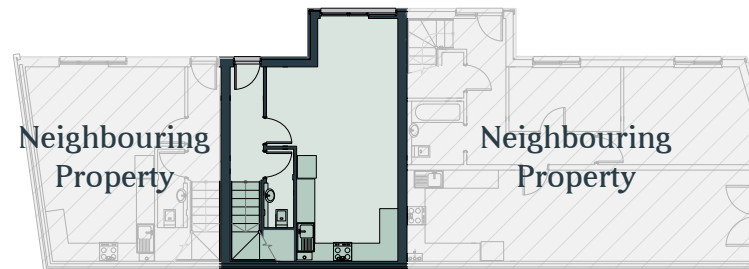
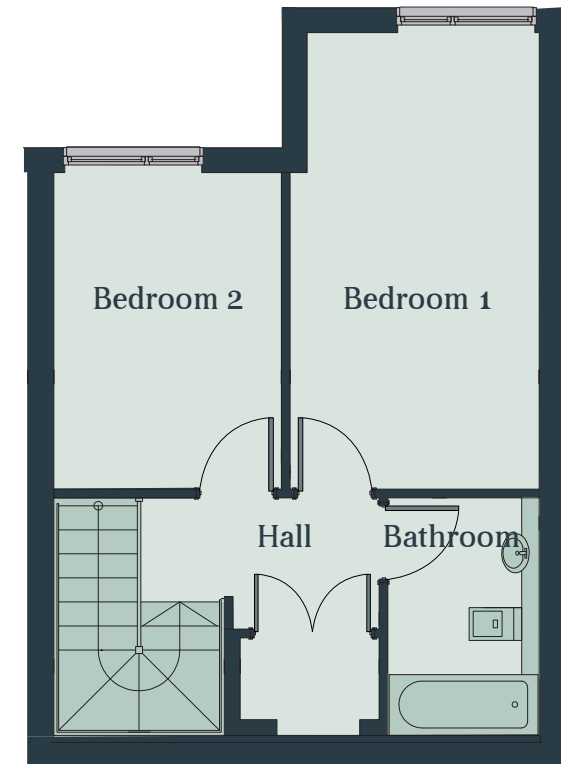
Room	Dimensions
Kitchen/Diner/Lounge	4.1m x 7.8m
W/C	1m x 2m
Bedroom 1	3.5m x 5.1m
Bedroom 2	2.6m x 3.5m
Bathroom	1.7m x 2.7m

All sizes are approximate and may be subject to change

Ground Floor



First Floor





Kitchener

Mews

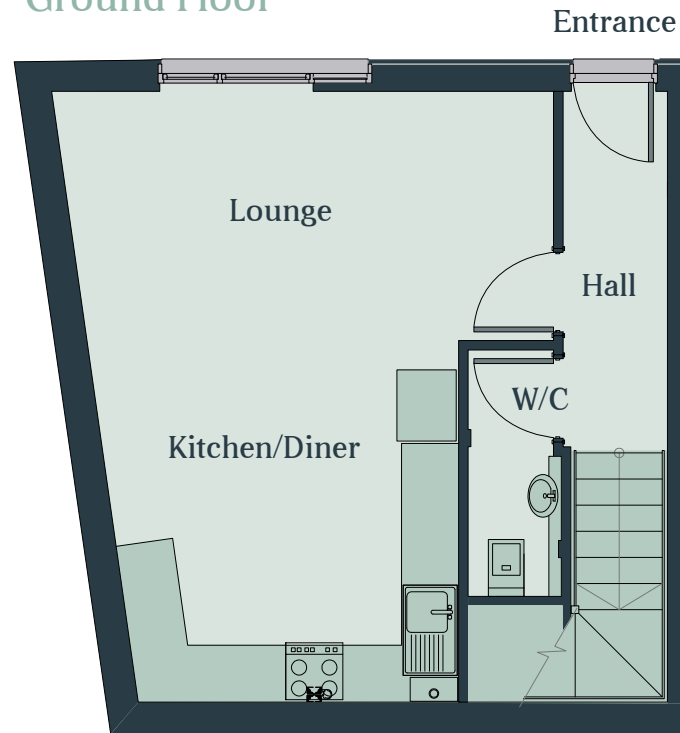
2 bedroom

End terrace home
Plot 5 (80.8sq.m.)

Room	Dimensions
Kitchen/Diner/Lounge	4.1m x 6.2m
W/C	1m x 2m
Bedroom 1	3.5m x 3.5m
Bedroom 2	2.6m x 3.5m
Bathroom	1.7m x 2.7m

All sizes are approximate and may be subject to change

Ground Floor



First Floor

